



## TC UV 12 36

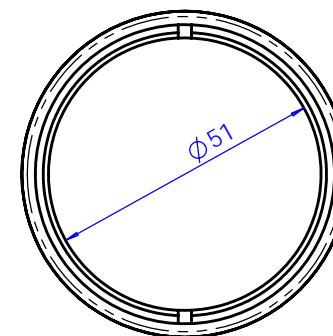
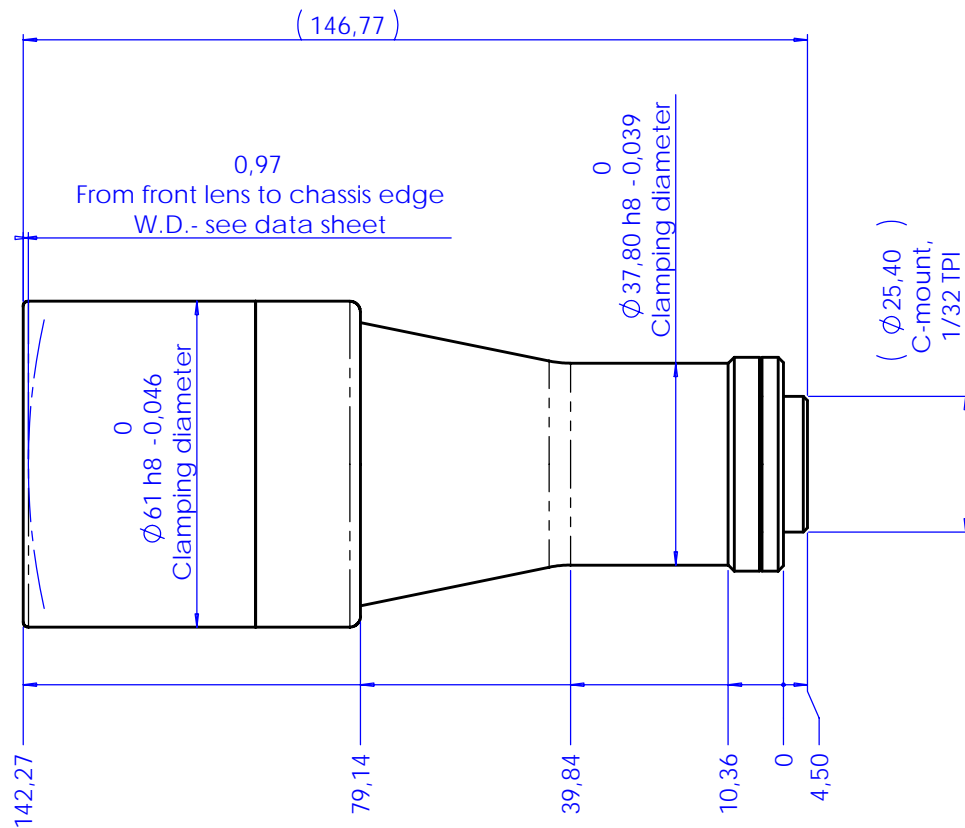
# UV Bi-Telecentric Lens for detectors up to 1/2"



part number		TC UV 12 36
<b>Range</b>		365 / 420
<b>Magnification</b>		0,175 +/- 3%
<b>Field Of View</b>	(mm)	
with 1/4" (3,6 x 2,7) detector		20,5 x 15,4
with 1/3" (4,8 x 3,6) detector		27,4 x 20,5
with 1/2" (6,4 x 4,8) detector		36,5 x 27,4
with 1/1.8" (7,13 x 5,37) detector		40,6 x 30,6
with 2/3" (8,8 x 6,6) detector	(mm)	diam. = 37,6
<b>Working Distance</b>		98,7 +/- 3
<b>Working F-number</b>	(degree)	8
<b>Telecentricity</b>	(%)	< 0,1
<b>Distortion</b>	(mm)	< 0,08
<b>Field Depth</b>	(%)	21,0
<b>CTF @70 lp/mm</b>		> 40
<b>Image side N.A.</b>		0,0620
<b>Object side N.A.</b>		0,0110
<b>Mount</b>	(mm)	C
<b>Length</b>	(mm)	142,3
<b>External diameter</b>	(g)	61,0
<b>Weight</b>		570

Possible vignetting at the image corners with 1/1.8" detectors

Rev No.	Description	Date	Name
A	First light	09/05/08	A.Vismara



Material	N.A.		Mass	0.57 kg	Scale	1:1			
Surface treatment	N.A.		Project-Prod.Item/Instrument	Telecentric lens UV 12 36					
Geometrical tolerance (ISO 2768-2)		Class	K	Undimensioned bevels	1x45°	Description Assembly			
Linear tolerance (ISO 2768-2)		Class	m	Undimensioned radii	R 0.5				
0.5	>3-	>6-	>30-	>120	>400-	>1000	>2000	Drawing No. <b>02626-0-A</b>	Sheet 1/1
+3	6	30	120	+400	+1000	+2000	+4000		
±0.1	±0.1	±0.2	±0.3	±0.5	±0.8	±1.2	±2	Date Designed: 09/05/08 A.Vismara Draw: 09/05/08 A.Vismara Checked: X C. Sedazzari	
		Date Name		Drawing No. <b>02626-0-A</b>		Sheet 1/1			
www.opto-engineering.com		Date Name		Drawing No. <b>02626-0-A</b>		Sheet 1/1			
OPTO ENGINEERING S.r.l. - 46100 Mantova Italy - Via Cremona, 29/2 - Tel. +39 0376 263565 - e-mail: info@opto-engineering.com - http://www.opto-engineering.com							Reproduction forbidden without specific authorization		