

TC 4M 24

BI-TELECENTRIC LENS FOR 4MPiX (22MM DIAGONAL) DETECTORS



Model:	TC 4M 24	/C or /F
Magnification (X):	0,700 +/- 3%	
Object Field (mm):	<i>Cypress IBIS4-6600:</i>	15,0 x 11,0
	<i>Kodak KAI 2020:</i>	16,9 x 12,7
	<i>Kodak KAI 2093:</i>	20,3 x 11,4
	<i>MICRON MI-MV40:</i>	23,5 x 17,3
	<i>Kodak KAI4011/4021:</i>	21,7 = 21,7
Working Distance (mm):	69,2 +/- 2	
Working F-number:	16	
MTF @50 lp/mm (%):	> 30 (*)	
Field Depth (mm):	3,5 @ F/ 16	
Telecentricity (degree):	< 0,1	
Distortion (%):	< 0,1	
Mount:	C (/C) or F (/F)	
Length (mm):	242,5	
Maximum external diameter (mm):	44,0	
Weigh (g):	810	

(*) Green or Red LED or pseudo monochromatic light highly recommended for optical specification improvement

ACCESSORIES AND OPTIONS:



Collimated/Telecentric illumination:
compatible with LTCL24 illuminator;
green light suggested.



Coaxial illumination:
not available.



Back Light illumination:
Compatible with LTBK36 illuminator.



Clamping Mechanics:
not available.



Direct illumination:
compatible with LTRN36 diffusive
anular illuminators.

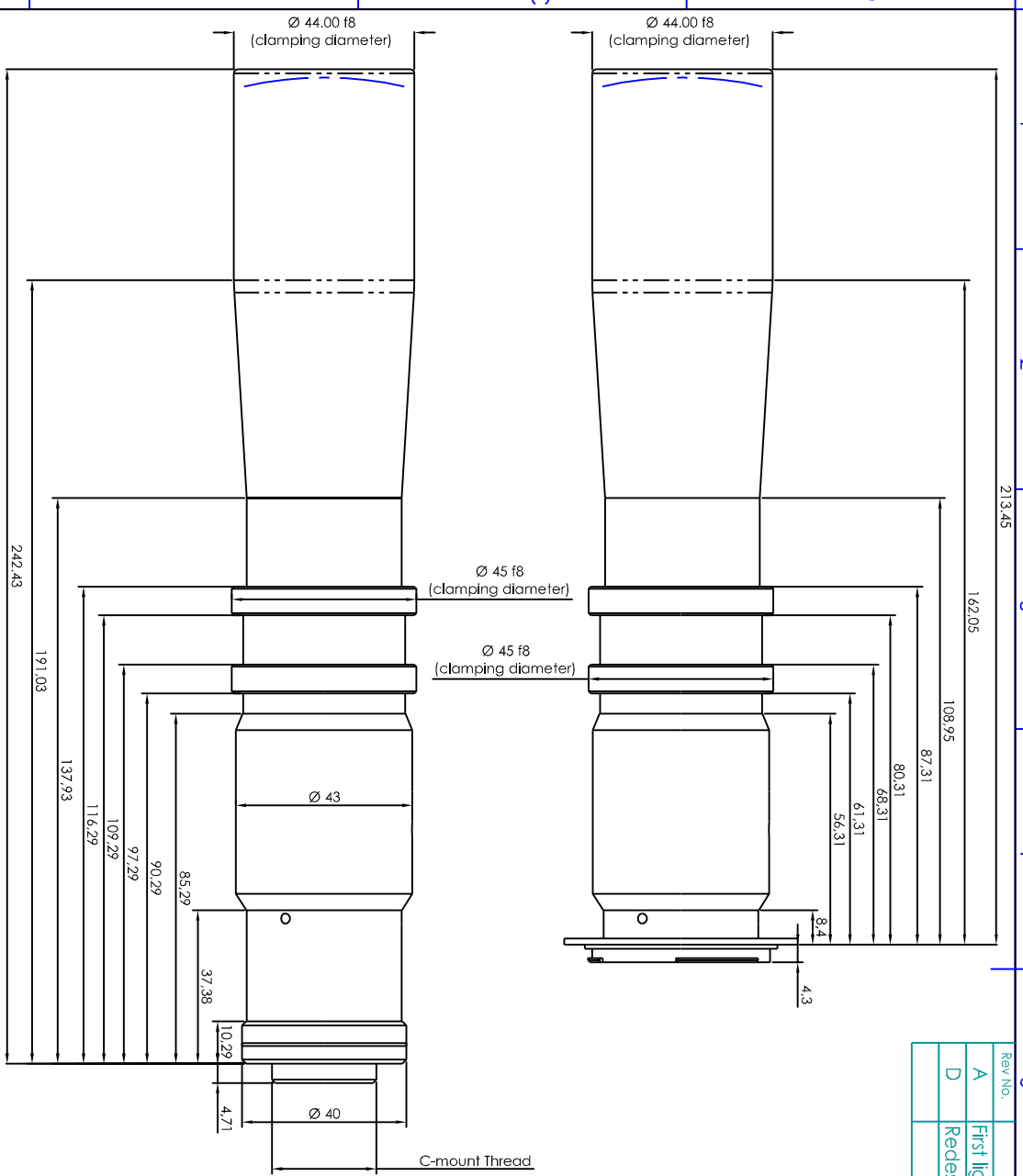


Filters:
filters can be inserted in the rear part
of the lens with the C-mount option.

Rev No.	Description	Date	Name
A	First light	01/05/03	A. Vismara
D	Redesign	18/07/06	A. Vismara

TC 4M 24/F (F-mount)

TC 4M 24/C (C-mount)



Material	N.A.	Mass	0.41 Kg	Scale	1:1
Surface treatment	N.A.	Project/Prod/Item/Instrument	Telecentric lens TC4M24		

Geometrical tolerance (ISO 27692)	Class	K	Undimensioned	1x45°	Description
U3	>3x	>1000	Undimensioned	in bevels	Assembly
+3	6	30	+400	1000	R 0.5
±0.1	±0.1	±0.2	±0.3	±0.5	±0.8
					±1.2

Class	K	Undimensioned	1x45°	Description
U3	>3x	>1000	Undimensioned	in bevels
+3	6	30	+400	1000
±0.1	±0.1	±0.2	±0.3	±0.5
				±0.8
				±1.2

Design	Date	Name	Drawing No.	Sheet
Designed	18/07/06	A. Vismara	18305-0-A-TC4M24	1/1
Draw	18/07/06	A. Vismara		
Checked	X	C. Sedozzi	Reproduction forbidden without specific authorization	

OPTO ENGINEERING S.r.l. - 46100 Mantova Italy - Via Cremona, 28 - Tel. +39 0376 229565 - e-mail: info@opto-engineering.com - http://www.opto-engineering.com