

BI-TELECENTRIC LENS FOR DETECTORS UP TO 2/3"



Part Number	TC 23 16	
Magnification		0,528 +/- 3%
Field Of View	(mm x mm)	
with 1/4" (3,6 x 2,7) detector		6,8 x 5,1
with 1/3" (4,8 x 3,6) detector		9,1 x 6,8
with 1/2" (6,4 x 4,8) detector		12,1 x 9,1
with 1/1.8" (7,13 x 5,37) detector		13,5 x 10,2
with 2/3" (8,8 x 6,6) detector		16,7 x 12,5
Working Distance	(mm)	45,3 +/- 1
Working F-number		8
Telecentricity	(degree)	< 0,1
Distortion	(%)	<0,07
Field Depth	(mm)	2,0
CTF @70 lp/mm	(%)	> 30
Image side N.A.		0,0620
Object side N.A.		0,0330
Mount		C
Length	(mm)	112,7
External diameter	(mm)	37,7
Weight	(g)	300

ACCESSORIES AND OPTIONS:



Collimated/Telecentric illumination:
compatible with LTCL16 illuminator;
green light suggested.



Coaxial illumination:
not available.



Back Light illumination:
Compatible with LTBK36 and LTBK48
illuminator.



Clamping Mechanics:
compatible with CMH016.

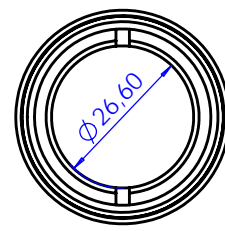
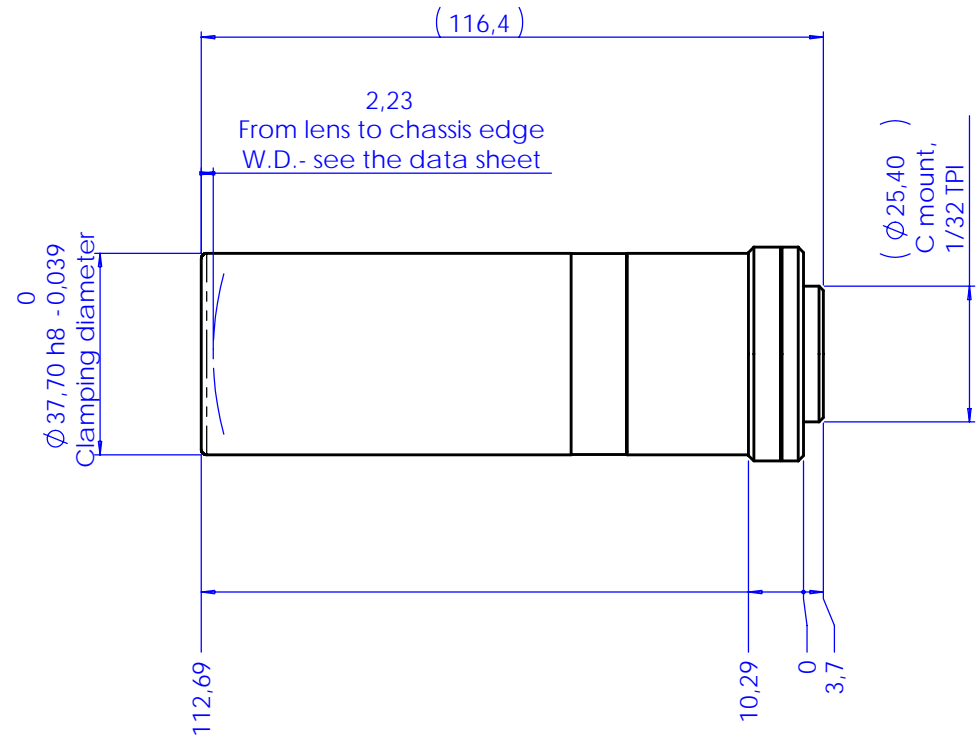


Direct illumination:
compatible with LTRN36 diffusive
anular illuminator.



Filters:
filters can be inserted in the rear part
of the lens, by means of TC Filter Kit.

Rev No.	Description	Date	Name
A	First light	01/05/03	A.Vismara
D	Redesign	15/02/06	A.Vismara
E	Length of C thread	12/01/09	A.Vismara



Material	N.A.			Mass	0.30 kg	Scale	1:1
Surface treatment	N.A.			Project-Prod.Item/Instrument Telecentric lens 23 16			
Geometrical tolerance (ISO 2768-2)			Class	K	Undimensioned bevels	1x45°	Description Assembly
Linear tolerance (ISO 2768-2)			Class	m			
0.5	>3-	>6-	>30+	>120	>400+	>1000	>2000
+3	6	30	120	+400	+1000	+2000	+4000
±0.1	±0.1	±0.2	±0.3	±0.5	±0.8	±1.2	±2
www.opto-engineering.com			Date	Name		Drawing No.	
			Designed	15/02/06	A.Vismara		01251-0-E
			Draw	12/01/09	A.Vismara		
			Checked	X	C. Sedazzari		Sheet
Reproduction forbidden without specific authorization							