

## BI-TELECENTRIC LENS FOR DETECTORS UP TO 2/3"



Part Number	TC 23 04	
<b>Magnification</b>		2,000 +/- 3%
<b>Field Of View</b>	<b>(mm x mm)</b>	
with 1/4" (3,6 x 2,7) detector		1,8 x 1,4
with 1/3" (4,8 x 3,6) detector		2,4 x 1,8
with 1/2" (6,4 x 4,8) detector		3,2 x 2,4
with 1/1.8" (7,13 x 5,37) detector		3,6 x 2,7
with 2/3" (8,8 x 6,6) detector		4,4 x 3,3
<b>Working Distance</b>	<b>(mm)</b>	57,1 +/- 2
<b>Working F-number</b>		11
<b>Telecentricity</b>	<b>(degree)</b>	< 0,08
<b>Distortion</b>	<b>(%)</b>	< 0,08
<b>Field Depth</b>	<b>(mm)</b>	0,2
<b>CTF @70 lp/mm</b>	<b>(%)</b>	> 30
<b>Image side N.A.</b>		0,0450
<b>Object side N.A.</b>		0,0900
<b>Mount</b>		C
<b>Length</b>	<b>(mm)</b>	101,4
<b>External diameter</b>	<b>(mm)</b>	28,0
<b>Weight</b>	<b>(g)</b>	130

### ACCESSORIES AND OPTIONS:



**Collimated/Telecentric illumination:**  
compatible with LTCL23 illuminator;  
green light suggested.



**Coaxial illumination:**  
not available.



**Back Light illumination:**  
Compatible with LTBK36 and LTBK48  
illuminators.



**Clamping Mechanics:**  
compatible with CMH023.

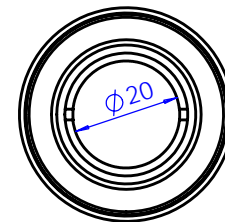
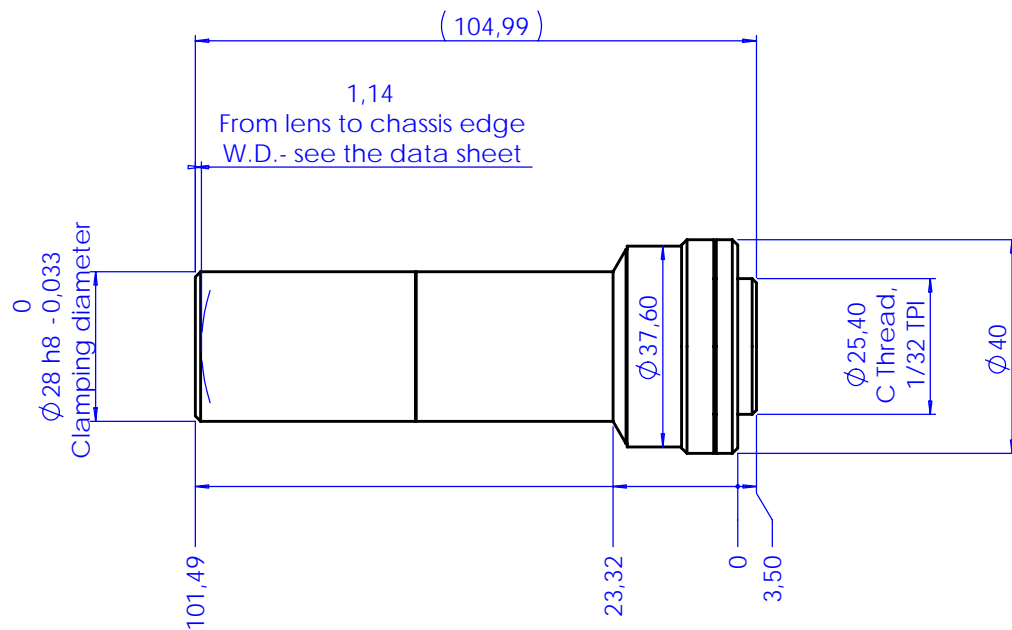


**Direct illumination:**  
compatible with LTRN23 diffusive  
anular illuminators.



**Filters:**  
not available.

Rev No.	Description	Date	Name
A	Layout	07/06/05	A.Vismara
B	Redesign: inox C thread, brand ring	25/09/08	A.Vismara



Material	N.A.			Mass	0.148 kg	Scale	1:1
Surface treatment	N.A.			Project-Prod.Item/Instrument Telecentric lens 23 04			
Geometrical tolerance (ISO 2768-2)			Class	K	Undimensioned bevels		
Linear tolerance (ISO 2768-2)			Class	m	1x45°		
0.5	>3-	>6-	>30-	>120	>400-	>1000	>2000
+3	6	30	120	+400	1000	+2000	+4000
±0.1	±0.1	±0.2	±0.3	±0.5	±0.8	±1.2	±2
					Undimensioned radii		
					R 0.5		
					Description ASSEMBLY		
					Drawing No.		
					02041-0-B		
					Sheet		
					1/1		
					Reproduction forbidden without specific authorization		
					www.opto-engineering.com		
					OPTO ENGINEERING S.r.l. - 46100 Mantova Italy - Via Cremona, 29/2 - Tel. +39 0376 263525 - e-mai: info@opto-engineering.com - http://www.opto-engineering.com		