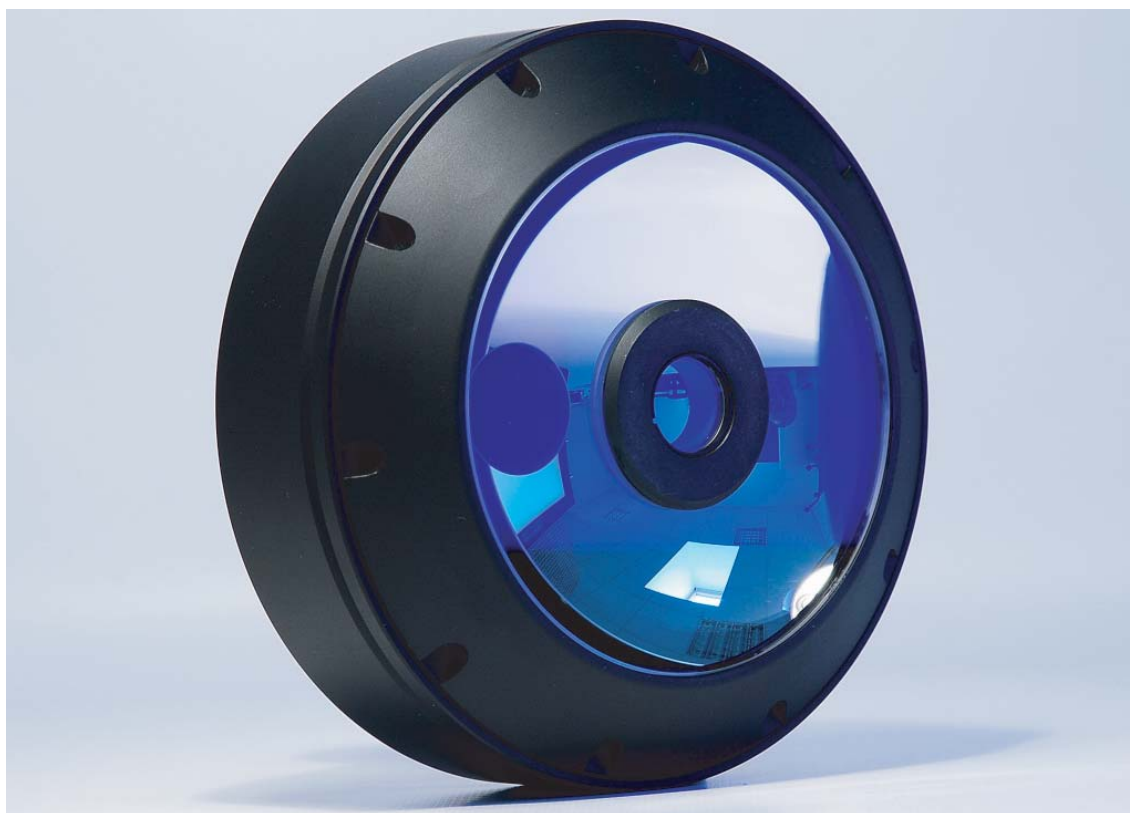


# PCCD013

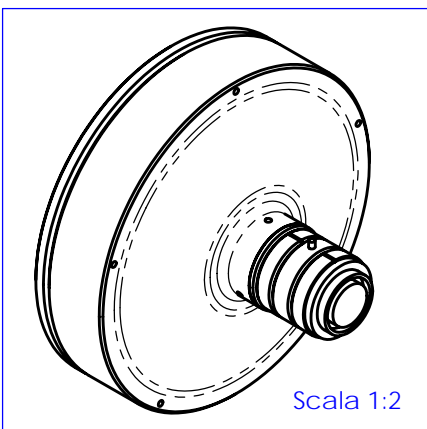
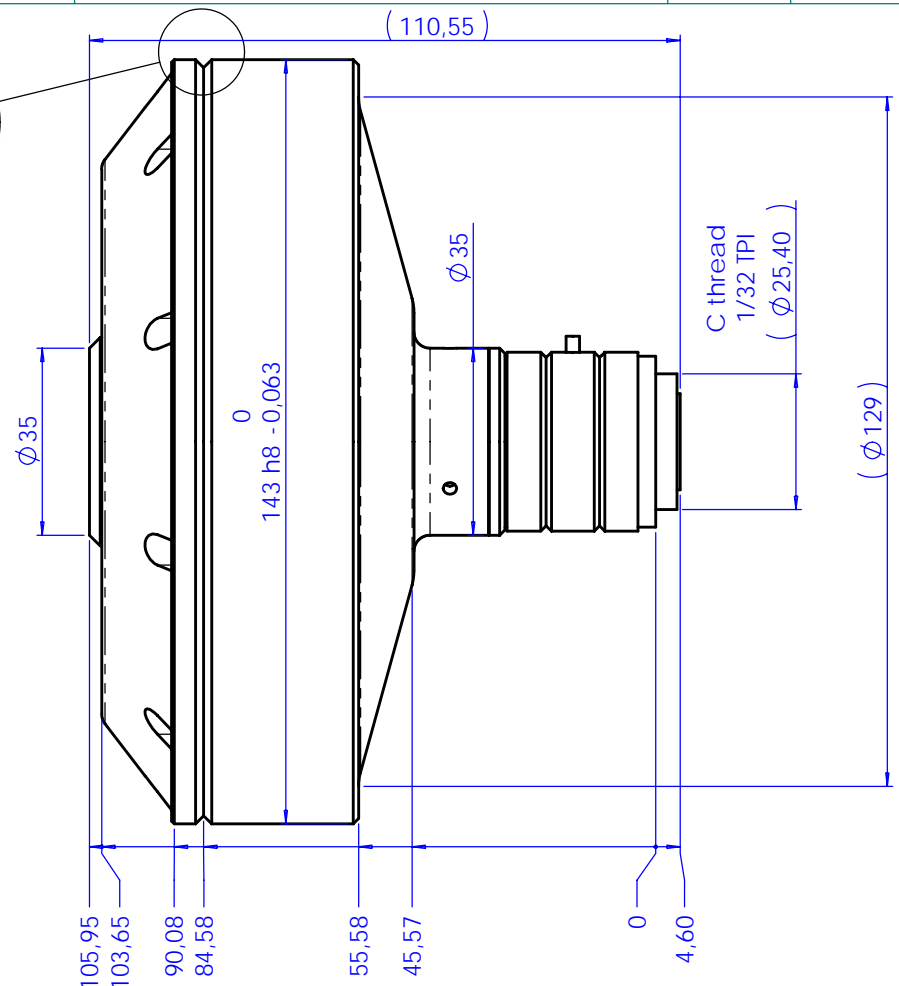
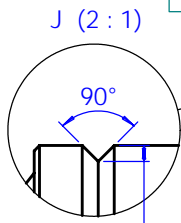
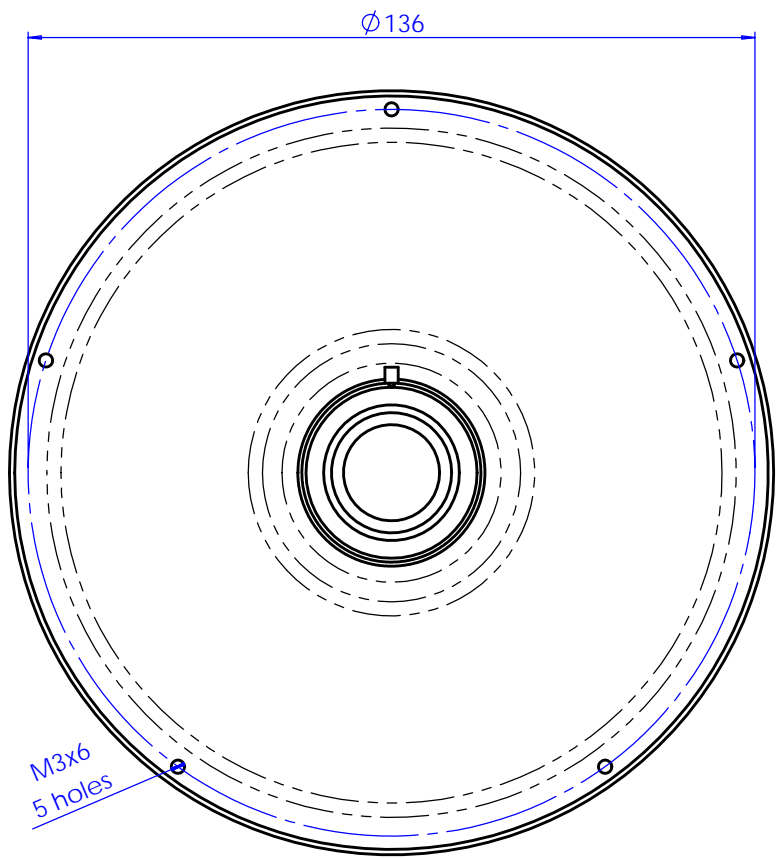
## CATADIOPTRIC PERICENTRIC LENS FOR 1/3" DETECTOR



P/N		PCCD013
<b>Detector Size</b>		1/3"
<b>min. FOV (diam x height)</b>	<b>(mm x mm)</b>	7,5 x 5
<b>typ. FOV (diam x height)</b>	<b>(mm x mm)</b>	15 x 10
<b>max. FOV (diam x height)</b>	<b>(mm x mm)</b>	25 x 17
<b>Wavelength range</b>	<b>(nm)</b>	450 .. 650
<b>Working distance</b>	<b>(mm)</b>	28 .. 56
<b>CTF @ 50 lp/mm</b>	<b>(%)</b>	> 35
<b>F-number</b>		6-32
<b>Diameter</b>	<b>(mm)</b>	143
<b>Length</b>	<b>(mm)</b>	110,5
<b>Weight</b>	<b>(g)</b>	980
<b>Mount</b>		C

MECHANICAL DRAWINGS: see next page >>

Rev No.	Description	Date	Name
A	First light	01/12/09	A.Vismara



Material	N.A.		Mass	0,98 kg	Scale	1:1			
Surface treatment	N.A.		Project-Prod.Item/Instrument	PCCD01x					
Geometrical tolerance (ISO 2768-2)		Class	K	Undimensioned bevels	1x45°	Description ASSEMBLY			
Linear tolerance (ISO 2768-2)		Class	m	Undimensioned radii	R 0,5				
0,5	>3-	>6-	>30-	>120	>400-	>1000	>2000	Drawing No. 14409-0-A	Sheet 1/1
+3	6	30	120	+400	1000	+2000	+4000		
±0,1	±0,1	±0,2	±0,3	±0,5	±0,8	±1,2	±2	Date	Name
		Designed	01/12/09	A.Vismara	Drawing No.		14409-0-A	Sheet	
www.opto-engineering.com		Draw	01/12/09	A.Vismara	Checked		X	C. Sedazzari	Reproduction forbidden without specific authorization
OPTO ENGINEERING S.r.l. - 46100 Mantova Italy - Via Cremona, 29/2 - Tel. +39 0376 263525 - e-mail: info@opto-engineering.com - http://www.opto-engineering.com									