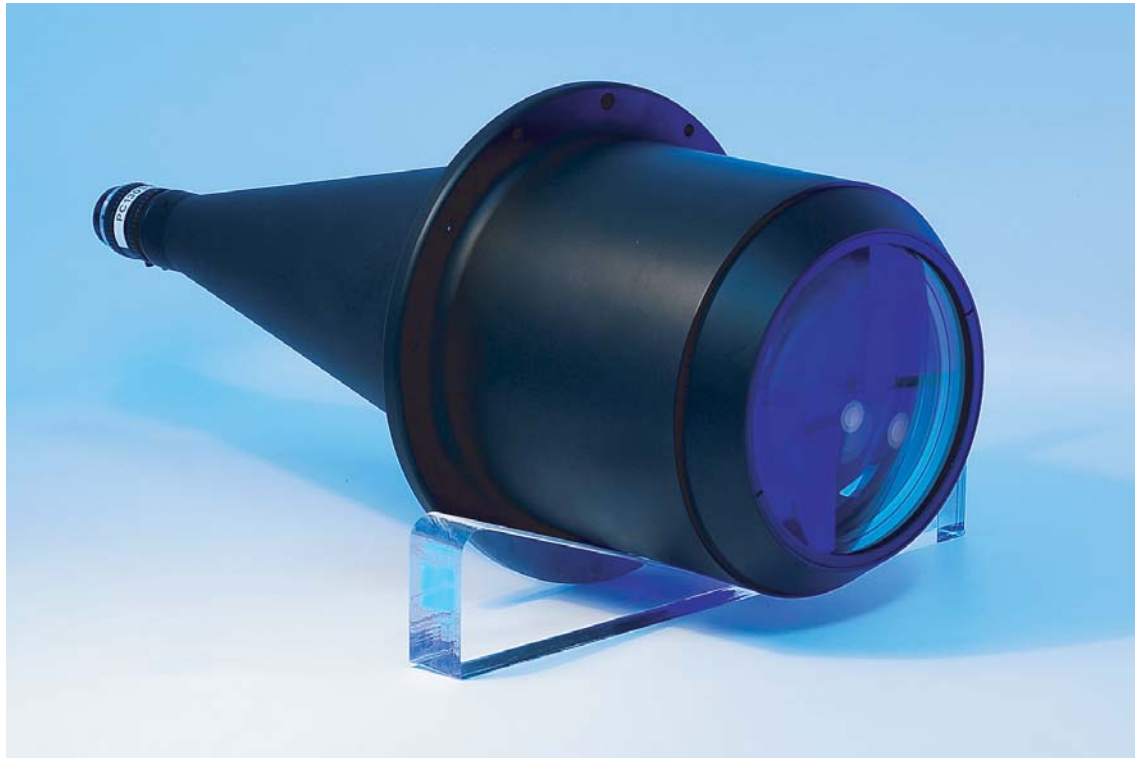


PC 13030HP

360° VIEW PERICENTRIC LENS
FOR 1/3" DETECTOR



P/N		PC13030HP
<i>Detector Size</i>		1/3"
<i>min. FOV (diam x height)</i>	<i>(mm x mm)</i>	20 x 60
<i>typ. FOV (diam x height)</i>	<i>(mm x mm)</i>	30 x 30
<i>max. FOV (diam x height)</i>	<i>(mm x mm)</i>	60 x 20
<i>Wavelength range</i>	<i>(nm)</i>	450 .. 650
<i>Working distance</i>	<i>(mm)</i>	20 .. 80
<i>CTF @ 50 lp/mm</i>	<i>(%)</i>	> 30
<i>F-number</i>		4-16
<i>Diameter</i>	<i>(mm)</i>	197
<i>Length</i>	<i>(mm)</i>	448
<i>Weigh</i>	<i>(g)</i>	6800
<i>Mount</i>		C

MECHANICAL DRAWINGS: see next page >>

