

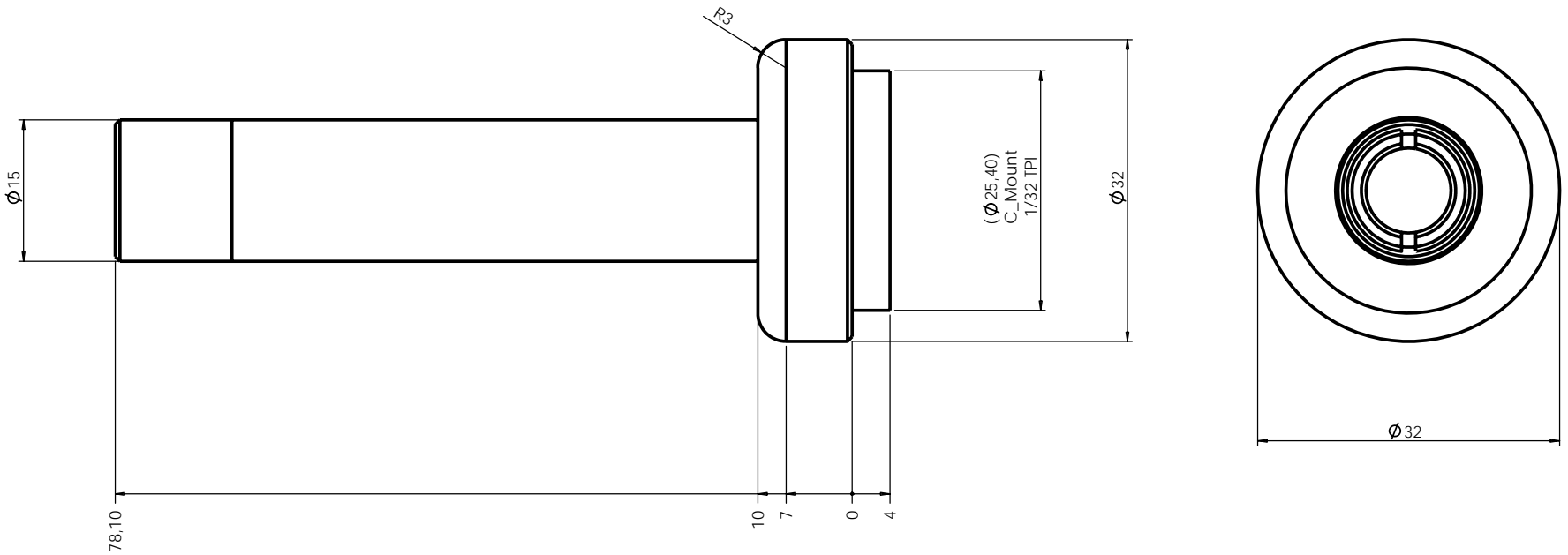
MC2.00X

2X ZERO DISTORTION MACRO
LENS FOR 2/3" DETECTOR



Part Number		MC2.00X
Magnification		2,00
Field Of Fiew	(mm x mm)	
1/4" (3,6 mm x 2,7 mm)		1,8 x 1,4
1/3" (4,8 mm x 3,6 mm)		2,4 x 1,8
1/2" (6,4 mm x 4,8 mm)		3,2 x 2,4
1/4" (7,0 mm x 5,3 mm)		3,5 x 2,6
1/4" (8,8 mm x 6,6 mm)		4,4 x 3,3
Working Distance	(mm)	33
Distortion	(%)	<0,01
F-number		16
Field Depth	(mm)	0,3
Length	(mm)	78
Diameter	(mm)	15,0
Height	(mm)	30
Mount		C-mount

MECHANICAL DRAWINGS: see next page >>



Rev No.	Description	Date	Name
A	MC2.00X layout	15/10/09	

Material	N.A.		Mass	90 gr.	Scale	2:1		
Surface treatment	N.A.		Project-Prod.Item/Instrument	MC2.00X				
Geometrical tolerance (ISO 2768-2)		Class	K	Undimensioned bevels	1x45°	Description MC2.00X layout		
Linear tolerance (ISO 2768-2)		Class	m	Undimensioned radii	R 0.5			
0.5	>3-	>6-	>30+	>120	>400+	>1000	>2000	Drawing No. 13811-6-A Sheet 1/1
±0.1	±0.1	±0.2	±0.3	±0.5	±0.8	±1.2	±2	
		Date	Name	Drawing No. 13811-6-A Sheet 1/1				
www.opto-engineering.com		Designed	15/10/09	Reproduction forbidden without specific authorization				
OPTO ENGINEERING S.r.l. - 46100 Mantova Italy - Via Cremona, 29/2 - Tel. +39 0376 263565 - e-mail: info@opto-engineering.com - http://www.opto-engineering.com		Draw	15/10/09					
		Checked	X					