

MC1.00X

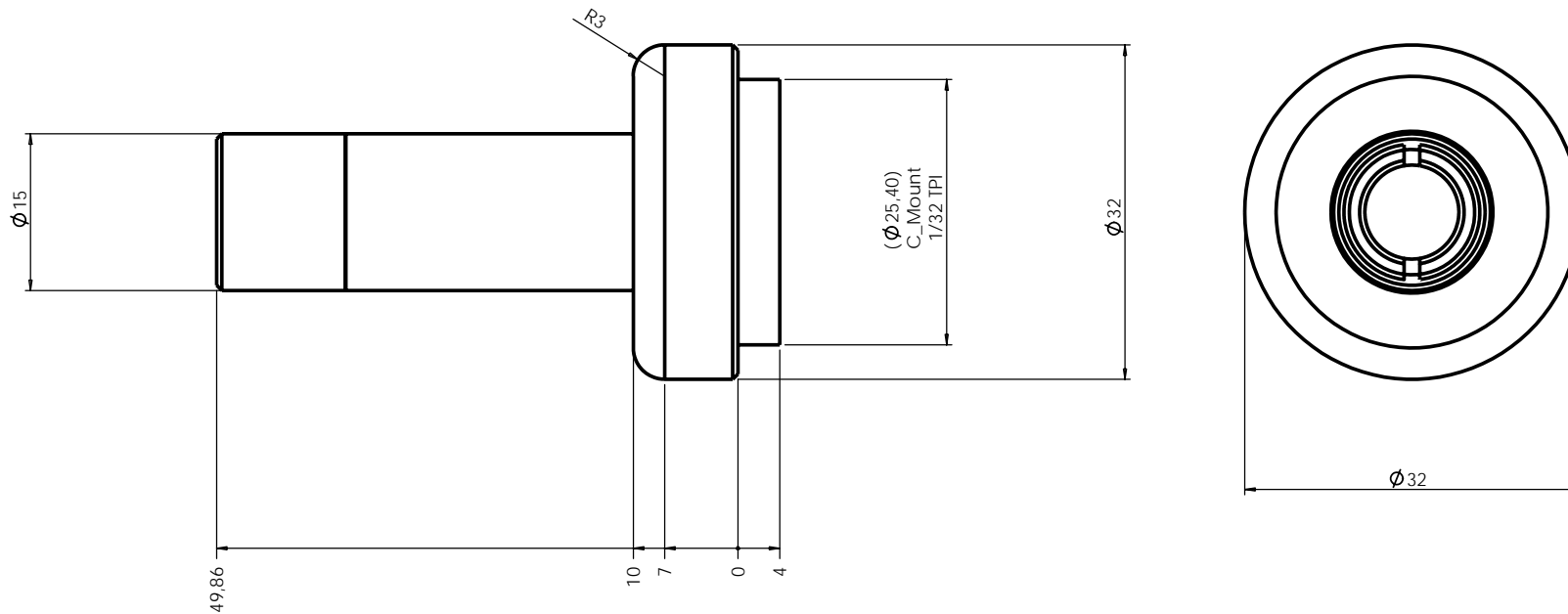
1X ZERO DISTORTION MACRO
LENS FOR 2/3" DETECTOR



Part Number	MC1.00X		
Magnification		1,00	
Field Of Fiew	(mm x mm)		
1/4" (3,6 mm x 2,7 mm)		3,6	x 2,7
1/3" (4,8 mm x 3,6 mm)		4,8	x 3,6
1/2" (6,4 mm x 4,8 mm)		6,4	x 4,8
1/4" (7,0 mm x 5,3 mm)		7,0	x 5,3
1/4" (8,8 mm x 6,6 mm)		8,8	x 6,6
Working Distance	(mm)	47	
Distortion	(%)	<0,01	
F-number		10	
Field Depth	(mm)	0,6	
Length	(mm)	50	
Diameter	(mm)	15,0	
Height	(mm)	30	
Mount		C-mount	

MECHANICAL DRAWINGS: see next page >>

Rev No.	Description	Date	Name
A	MC1.00X layout	15/10/09	



Material	N.A.		Mass	90 gr.	Scale	2:1	
Surface treatment	N.A.		Project-Prod.Item/Instrument	MC1.00X			
Geometrical tolerance (ISO 2768-2)		Class	K	Undimensioned bevels	1x45°	Description MC1.00X layout	
Linear tolerance (ISO 2768-2)		Class	m	Undimensioned radii	R 0.5		
0.5 ±3	>3± 6	>6± 30	>30± 120	>120 ±400	>400± 1000	>1000 ±2000	>2000 ±4000
±0.1	±0.1	±0.2	±0.3	±0.5	±0.8	±1.2	±2
www.opto-engineering.com		Date	Name	Drawing No.	Sheet		
Designed		15/10/09		13811-4-A	1/1		
Draw		15/10/09			Reproduction forbidden without specific authorization		
Checked		X			OPTO ENGINEERING S.r.l. - 46100 Mantova Italy - Via Cremona, 29/2 - Tel. +39 0376 263565 - e-mail: info@opto-engineering.com - http://www.opto-engineering.com		