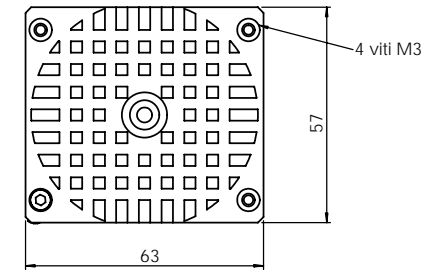
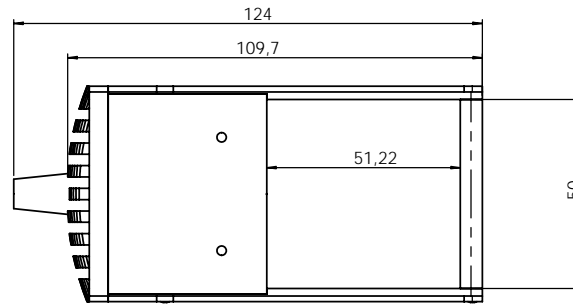
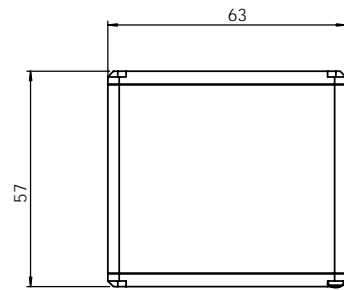


Rev No.	Description	Date	Name
A	2 diffusori, L = + 10 mm, passacavo, sedi schedina	15/09/04	A.Vismara
B	Finestra opaca	01/12/04	A.Vismara
D	Beam splitter e diffusori rimovibili ad assieme montato	08/04/08	A.Vismara



Material	N.A.	Mass	355 g	Scale	1:1		
Surface treatment	N.A.	Project-Prod.Item/Instrument Illuminatore LTCX36					
Geometrical tolerance (ISO 2768-2)		Class	K	Undimensioned bevels	1x45°		
Linear tolerance (ISO 2768-2)		Class	m	Undimensioned radii	R 0,5		
0.5	>3-	>6-	>30-	>120	>400-	>1000	>2000
-3	6	30	120	400	1000	2000	4000
±0.1	±0.1	±0.2	±0.3	±0.5	±0.8	±1.2	±2
Date		Name		Drawing No.		Sheet	
Designed 20/05/08		A. Bnà		OVDIMLTCX36		1/1	
Draw 20/05/08		A. Bnà		Reproduction forbidden without specific authorization			
Checked x		C. Sedazzari					
OPTO ENGINEERING S.r.l. - 46100 Mantova Italy - Via Cremona, 29/2 - Tel +39 0376 263565 - e-mail: info@opto-engineering.com - http://www.opto-engineering.com							