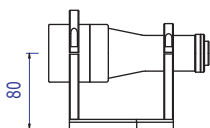
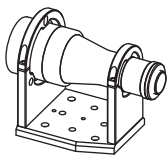


CMH036

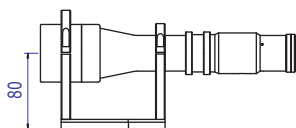
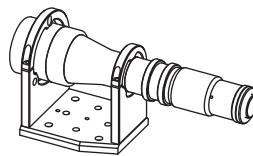
MECHANICAL HOLDER FOR 36-TYPE TELECENTRIC OPTICS



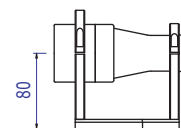
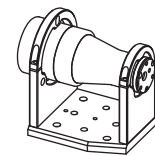
Part Number		CMH036
Compatible Optics		
Matrix Camera Telecentric		TC1336, TC1236, TC2336
Large Detector Telecentric		TC4M36, TC2M36
UV Telecentric		TCUV1236, TCUV2336
LT CL illuminators		LTCL36/x, LTCLUV36
Compatible Plates		CMPT36
Length	(mm)	110,0
Width	(mm)	97
Height	(mm)	125,5
Optical Axis Height	(mm)	80,0
Weigh	(g)	520,0



Matrix and UV Telecentric
assembly example



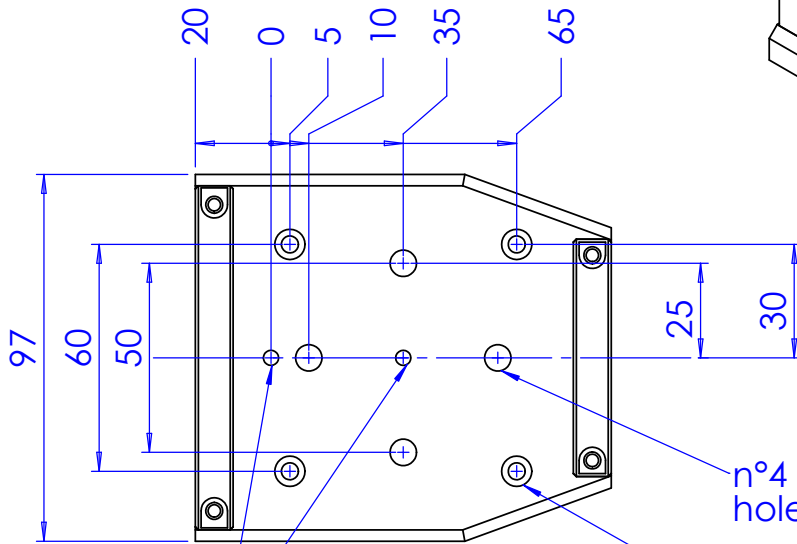
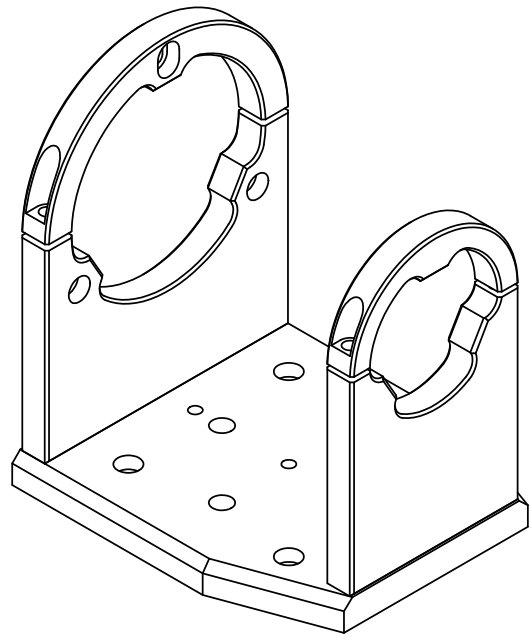
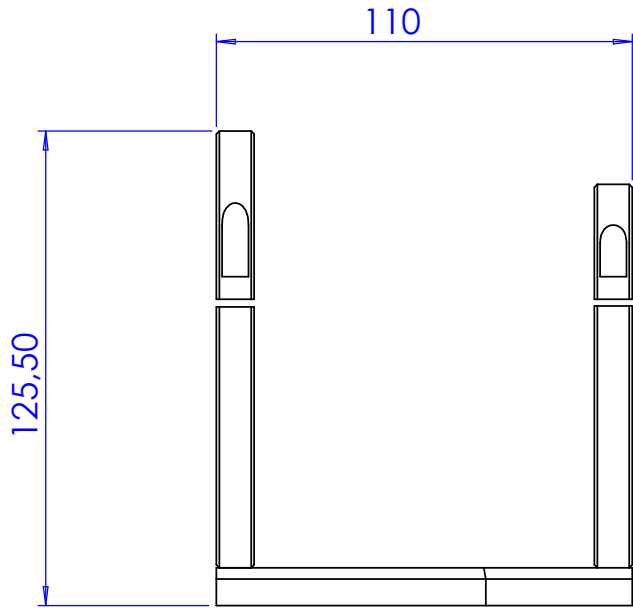
Large Detector Telecentric
assembly example



LTCL Collimated Illuminator
assembly example

MECHANICAL DRAWINGS: see next page >>

Rev No.	Description	Date	Name
A	New Part	16/09/09	N. Santini



n° 2 dowelling holes $\varnothing 4$ F6

n°4 trough all holes for M6 screws

n°4 counterbored holes for M4 screws

Material Aluminum - UNI EN 573 EN AW 6063			Mass 518.2 g	Scale 1:2					
Surface treatment Grey Anodizing			Project-Prod.item/Instrument CMHO36						
Geometrical tolerance (ISO 2768-2)			Description CMHO36						
Linear tolerance (ISO 2768-2)									
0.5 ±3	>3± 6	>6± 30			>30± 120	>120 ±400	>400± 1000	>1000 ±2000	>2000 ±4000
±0.1	±0.1	±0.2	±0.3	±0.5	±0.8	±1.2	±2		
 www.opto-engineering.com		Date	Name	Drawing No.	Sheet				
		Designed	16/09/09	N. Santini	18873-0-A	1/1			
		Draw	16/09/09	N. Santini					
Checked	X	C. Sedazzari	Reproduction forbidden without specific authorization						