

ILLUMINATORS FOR 360° OPTICS

LTRNPC30 LED ring illuminator has been specifically designed for OE *PC13030* and *PC12030* Pericentric Lenses. The Illuminator is made of 8 LED bar modules assembled on a mounting flange. The bars can be electrically connected in parallel by means of cables plugged into bar connectors, thus maintaining the default 24V DC input voltage in any module. Each bar is provided with a partially diffusive window, ensuring homogeneous target illumination; each module can be oriented in order to achieve the most appropriate angle of illumination. The LED illuminator can be easily assembled onto a Pericentric Lens by means of the thread in the mounting flange. This unit is also suitable for direct illumination in Telecentric Lens applications.

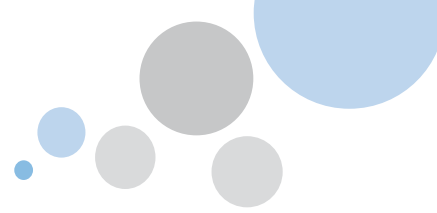


part number		LTRNPC30
light colour		white, 6300 K
dimensions		
outer diameter	(mm)	180,0
inner diameter	(mm)	153,0
height	(mm)	35,0
weight	(g)	250
mount		M153 x 1
voltage	(V, DC)	24
power	(watt)	9
compatible PC lenses		PC13030HP, PC12030HP
compatible TC lenses		TCxx80, TCxx96, TCxx120

LTRNPCPW is a LED illuminator designed for OE *PolyView Optics* illumination. The electrical layout is the same as the *LTRNPC30* (see above). The eight bars can be oriented in order to provide the most suitable geometry for illuminating the outer surfaces of a sample imaged by a *PCPW0xx* lens. The illuminator can be assembled on the PolyView Lens and placed at different heights by unscrewing the M3 grains on the illuminator flange into one of the illuminator V-grooves.



part number		LTRNPCPW
light colour		white, 6300 K
dimensions		
outer diameter	(mm)	160,0
inner diameter	(mm)	117,0
height	(mm)	35,0
weight	(g)	160
mount		side M3 through-holes
voltage	(V, DC)	24
power	(watt)	9
compatible PC lenses		PCPW013, PCPW012, PCPW023
compatible TC lenses		TC2372, TCxx80



ILLUMINATORS FOR 360° OPTICS



part number		LTRNPWHI
light colour		white, 6300 K
dimensions		
outer diameter	(mm)	54,0
inner diameter	(mm)	28,0
height	(mm)	18,3
weight	(g)	30
mount		threaded retaining ring
voltage	(V, DC)	24
power	(watt)	3
compatible PC lenses		PCPWOxx, PCHIOxx
other compatible lenses		TC230x, MC3-03X

LTRNPWHI is a small LED ring illuminator compatible with different OE products and suitable for a variety of inspections.

The conic shape of the diffuser provides the optimum illumination geometry for *Hole Inspection Optics* since the light output is oriented towards the hole surfaces.

The height of the illuminator can be adjusted to fit different object geometries by means of a flange which locks the illuminator onto the *Hole Inspection* lens body.

This illuminator is also perfectly suitable for illuminating the inner sides of a cavity imaged by a *PolyView Lens*; the illuminator flange is threaded to fit the PolyView Lens internal mounting thread.

LTRNPWHI also mechanically and optically fits TC230x and TC4MOx type telecentric lenses, allowing for a very even illumination, ideal for surface measurement applications.

This illuminator can also be used in combination with OE *MC3-03X* Variable Macro Lens over the entire range of magnifications.



LTRNPWHI assembled into a *PolyView* Lens to provide inner sample illumination.



LTRNPWHI used in combination with an *Hole Inspection Lens*.



LTRNPWHI fits OE small telecentric lens for perfect sample illumination and accurate measurement.



LTRNPWHI mounted on a *MC3-03X* macro lens.